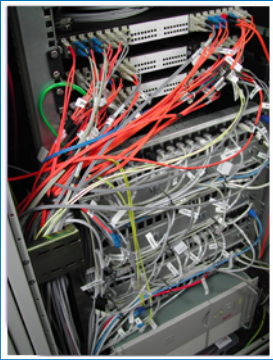


## Network Assessment



### Typical Drivers for an Assessment

- Performance and Reliability problems on the network
- Bandwidth Capacity Planning for both applications and network
- Network Expansion or Modification
- New Application Implementation

### Network Performance Assessment includes:

- Analysis of traffic by protocol
- Connection Retransmission
- Server Delay Distribution
- Network Delay Distribution
- Network Efficiency
- Top Talkers
- Top Listeners
- Potential Rogue/Recreational Traffic

### Network Assessment Results

One client experienced immediate results with our assessment.

*"The visibility of network traffic was remarkable and there was an immediate improvement in throughput once some initial traffic shaping rules were applied. It turns out that a default setting on the management console for our enterprise anti-virus application was checking the status of every device on the network every five minutes, causing excessive bandwidth usage. Even the firewall was blind to this as it appeared to be regular network traffic. Our lack of traffic visibility caused us to unknowingly struggle with this problem for over a year."*

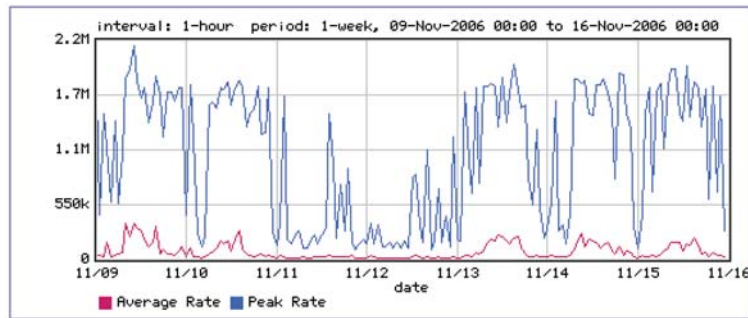
1903 Solutions LLC  
San Diego (HQ)  
Phone: 619.206.7127  
info@1903solutions.com  
www.1903solutions.com



Do you know how well your network is performing and what applications are utilizing network bandwidth?

### Perception

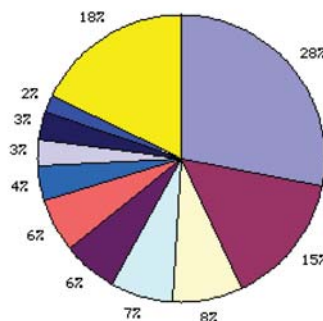
This is a question that many IT departments can not fully answer. Reliability is often measured in number of complaints received or by "perception" of speed. The reality is that most corporate IT groups don't fully know what traffic is passing on a network. Network assessments can be invaluable in providing these answers, and enabling companies to better plan for the future.



### Identification

A thorough network assessment can answer all of the questions you have about what is happening on your network. It can identify all of the types of traffic that are passing, how much of each type is passing, and which traffic is having a hard time passing on your network. Many customers are surprised at the amount of web browsing, or streaming media, that is hogging up bandwidth. If vital bandwidth is being taken by non-critical traffic, the critical traffic is slowed. This is a situation that IT groups strive to avoid since it is almost impossible to determine which IT policies are working unless you have the tools to assess the performance of your network.

### Top 10 Classes



Class Name	Average Rate (bps)	(%)
1. /Outbound/HTTP	22k	28
2. /Outbound/LotusNotes	12k	15
3. /Outbound/SMTP	6287	8
4. /Outbound/Citrix/Default	5708	7
5. /Outbound/NetBEUI	5071	6
6. /Outbound/Default	4867	6
7. /Outbound/ICMP	3564	4
8. /Outbound/FTP	2769	3
9. /Outbound/SAP	2760	3
10. /Outbound/SNMP	2027	2
All other classes	14k	18

period: 1-week, 09-Nov-2006 00:00 to 16-Nov-2006 00:00

### Interpretation

This is where 1903 Solutions can help. Our Network Performance Analysis can show you exactly what is happening on your network. We can identify the traffic on your network, how much bandwidth it utilizes, and assist you in coming up with measures to optimize the flow of traffic to suit the needs of your business. If you prefer an even more thorough analysis we can do a deep inspection in order to identify which stations are responsible for rogue traffic as well as which stations are bandwidth hogs.

